

DBTuna for SQL Server

Datasheet



Technical Specifications

Supported Databases

- SQL 2000 Service Pack 3
- SQL 2005
- SQL 2008

All Hardware/OS supported as monitoring is remote

DBTuna Platform OS

Windows
Linux
Solaris

Mixed mode authentication is required if monitoring from Linux or Solaris

Client Support

Internet Explorer 5+
Firefox

Application & Database Performance Management

What is DBTuna?

DBTuna for Microsoft SQL Server is a performance management solution that gives businesses the ability to proactively monitor, analyze, and tune their SQL databases.

How does DBTuna work?

DBTuna continuously monitors SQL Server 24x7 and stores detailed historical data about the resource consumption and wait events in a repository. This data is correlated, aggregated and sorted so that it can be easily displayed in the intuitive web based user interface.

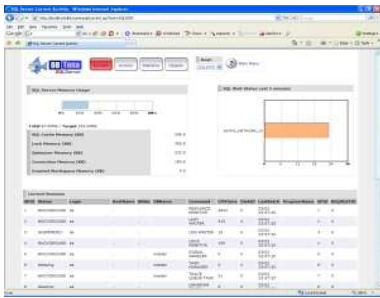
This historical data allows the DBA to answer questions such as: "what caused the slowdown in the application yesterday after lunch?" or "Why is the overnight batch job still running at 9am this morning?". The historical data can also be used in a proactive manner e.g. to assess upward trends in SQL or application resource usage and to tune or fix issues before they become user problems.

Agentless Technology

No software is installed on the monitored databases; DBTuna uses agentless technology allowing it to monitor from a remote server negating deployment issues and monitoring overhead.

Rapid ROI

DBTuna can be installed and monitoring within minutes, which means that the expert DBA can be using the information straightaway to solve real business issues.

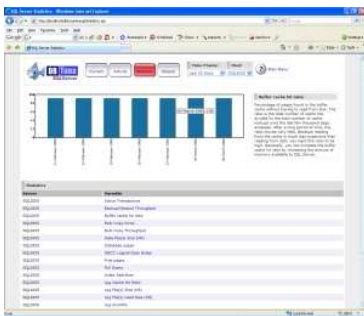
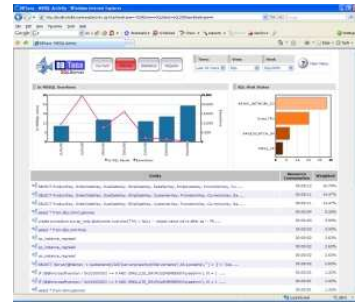


Current Activity

- SQL Server Memory Usage Information
- Resource Consumption and Waits for last 5 minutes
- Details on all currently connected database client sessions

Historical Activity

- Time series activity graphs showing SQL Server resource consumption v's # SQL queries.
- Completely configurable views, from last 5 minutes to last 30 days.
- Breakdown of activity by Wait state
- Correlated drilldown by Server, Client, SQL, Grouped SQL, User, Program, Session, Database

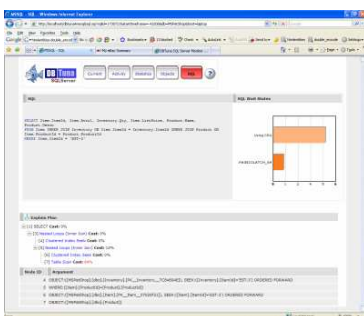
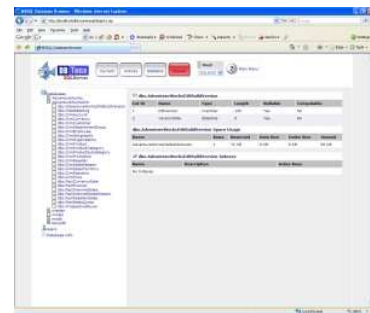


Statistics

- Report and analyze any statistic available from SQL Server
- Display Delta Graph's over-time

Objects

- One-click view to check or cross reference Database config values.
- Switch between monitored databases to compare config values.
- Quickly view information on tables and indexes.



SQL Drilldown

- Graphical Explain Plan Treeview
- Display wait states for SQL.
- Parses the SQL to make it easier to read.
- For SQL Batches, DBTuna will display the time and wait events for each individual part of the batch.

